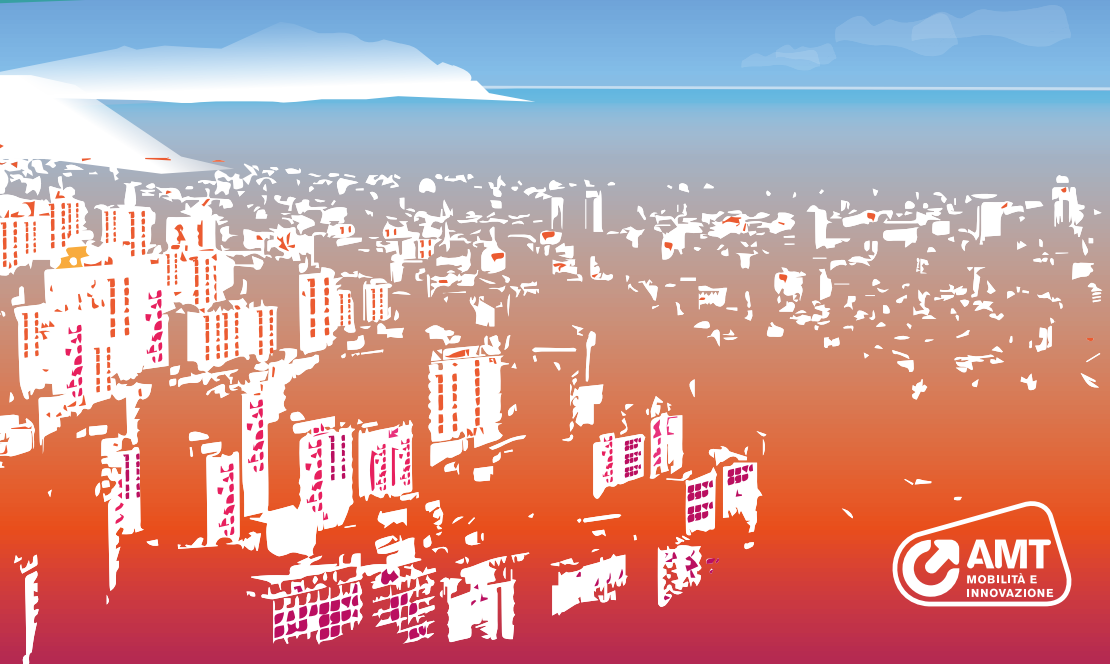


ON TOP OF THE CITY

with AMT's vertical mobility system



Granarolo

Funicolare Principe Granarolo

S. Teodoro

Funicolare Principe Granarolo

stazione via Bari

via San Benedetto

M Principe

Lagaccio

Piazza Acquaverde

Castello D'Albertis
corso Dogali
Ascensore Montegalletto
via Balbi

M Darsena

Piazza Caricamento

via Gramsci

Porto Antico

M San Giorgio VMSPORT

via del Molo

via Turati

M Sarzano Sant'Agostino

Righi

stazione Superiore Righi

stazione San Simone

stazione via Preve

stazione Madonna

stazione San Nicola

stazione corso Carbonara

Funicolare Zecca Righi

Piazza della Nunziata

via Garibaldi

via Garibaldi

Piazza Banchi

Piazza Campetto

Piazza Fontane Marose

Piazza De Ferrari

M De Ferrari Hitachi

piazza Matteotti

piazza Sarzano

Castelletto

Ascensori Castelletto Ponente e Levante

corso Magenta

via Bertani

Funicolare Sant'Anna

Piazza Corvetto

via XX Settembre

Piazza Dante

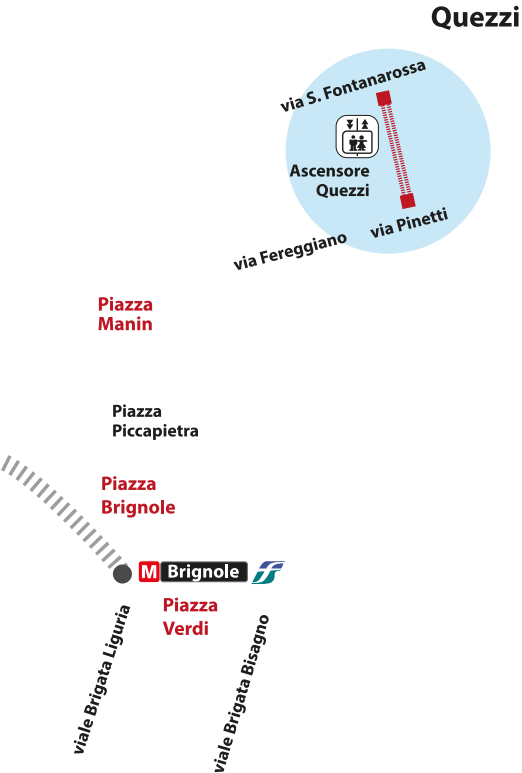
via Freschi



A unique mobility system

Some innovative transport facilities were developed at the end of the 19th century in order to connect the city centre to the hills.

They are now part of Genoa's vertical mobility system, which combines the beauty of the views over the city with the charm of history and the genius of a technological dawn that marked the development of transportation engineering to the present day.



Zecca-Righi Funicular (1897)

Built between 1895 and 1897 to serve the growing hilly districts, today the funicular is a “small metro” which climbs for 1,500 metres from the centre to the hills of Righi. Along the route, travellers can admire breathtaking panoramas down to the sea and capture the urban development audacity from an unusual point of view.



Things to do

Don't miss the view from the funicular panoramic terraces. At a short distance, the Astronomical Observatory, an adventure park, restaurants and trattorias of secular long-standing tradition and the Peralto Park.





Type:	Funicolar Zecca-Righi
From:	Largo Zecca
To:	Righi
Timetable:	every day 06.40 – 00.00
Length:	1430 m
Capacity:	150+1 persons
Frequency:	about 15'-20'
Journey time:	about 12'

Castelletto Levante Lift (1909)

Its plastered walls, glass windows and decorations, recently restored according to the original drawings, give the feeling of a trip back to the last century.

From the heart of the city, the lift leads to Spianata Castelletto and its tree-lined balcony: a unique and unmissable view.

Things to do

Comfortably sitting on the benches of the esplanade, you can taste ice creams and pastries of renowned tradition.





Type:	Lift Castelletto Levante
From:	Portello square
To:	Esplanade Castelletto
Timetable:	every day 6.40 – 00.00
Length:	57 m
Capacity:	25 persons/cabin
Frequency:	uninterrupted service
Journey time:	about 1,5'



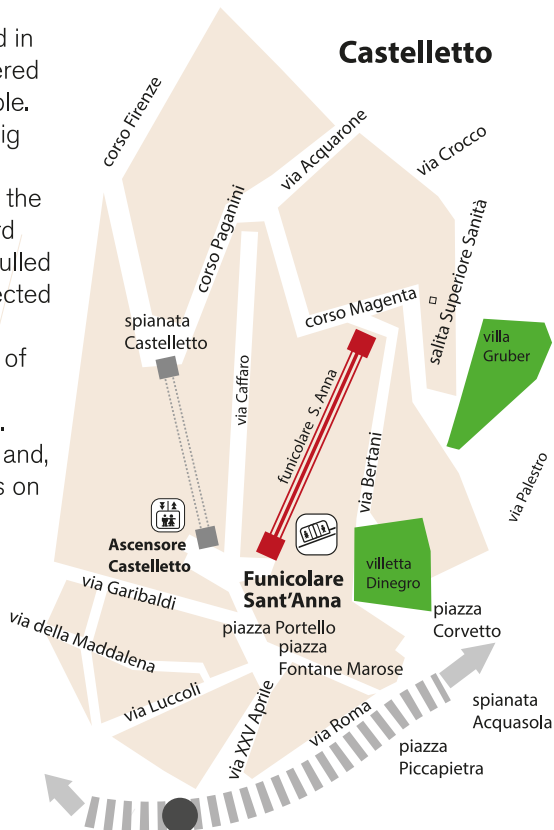
Sant'Anna Funicular (1891)

Genoa's most ancient funicular was opened in 1891, and was operated with a water-powered system, based on the counterweight principle. The driver of the upper station car filled a big tank situated in the lower part of the car, calculating the amount of water needed on the basis of the number of passengers on board the two cars. The heavier descending car pulled up the ascending car to which it was connected by a cable.

The original system was abandoned at end of the '70s with the building of a new one, compliant with the new regulations in force. The funicular has no intermediate stations and, thanks to its position, offers exclusive views on some historic buildings in Genoa.

Things to do

A few steps away from the funicular you can meet cafeterias, ice cream parlours and typical places where you can taste pizza and farinata. Walking for 10 minutes through the heart of Castelletto district, you reach the historic park of Villa Gruber, walking along Corso Magenta and Corso Solferino.





Type:	Funicular Sant'Anna
From:	Portello square
To:	Corso Magenta
Timetable:	every days 7.00 – 00.30
Length:	370 m
Capacity:	30 + 1 persons
Frequency:	uninterrupted service
Journey time:	about 2'



Montegalletto Lift (1929)

Built in 1929, it was renewed by AMT in 1995. A unique facility which attracts countless visitors thanks to the originality of its transport solution.

The car, towed with a funicular system, travels horizontally through a 250 metre long tunnel, before travelling vertically for 70 metres. From via Balbi you reach Corso Dogali in three minutes.

Things to do

A visit to the D'Albertis Castle, with its garden open to the public and the Museum of Cultures of the World. A walk along Corso Dogali where, at building number 5, a plaque commemorating reminds the birth of the poet Eugenio Montale. walking further, you arrive at the 18th century Albergo dei Poveri and along Corso Carbonara, to the heart of Castelletto Castelletto from where you can enjoy sweeping views and unexpected glimpses of the city.





Type:	Lift Montegalletto
From:	Balbi Street
To:	Corso Dogali
Timetable:	Working day 6.45 – 21.20 Holiday 8.00/21.00
Length:	235 m + 70 m
Capacity:	23 persons
Frequency:	uninterrupted service
Journey time:	about 3'



Granarolo Cog Railway (1901)

Built in 1901, it may well be the most ancient cog railway in Italy. The historical red cars, with wooden seats, from Lagaccio street takes you the hill of Granarolo and to its original Liberty style station.

con the car climbs up the steep hill on a rail with a third toothed rack rail with cogs engaged by a cogwheel.

Granarolo offers an astonishing panorama of Genoa and the sea.

Things to do

In the vicinity, the Church of St. Maria (1190), the walls of Granarolo (1600), the Gate of Granarolo (1800).

Walking further on for about 2000 m you reach Piani di Fregoso, where you can enjoy some activities (minigolf) surrounded by green and family-run trattorias.

Walking for about one hour, you arrive at Fort Begato and on to Fort Sperone. A pleasant 1,5 h long walk leads to Peralto Park and Righi Funicolar.





Type:	Railway at Gear Rack Granarolo
From:	Lagaccio Street
To:	Granarolo
Timetable:	Working days 6.00 – 24.00 Holiday 08.00/ 19.30
Length:	1140 m
Capacity:	45 persons
Frequency:	about 40'
Journey time:	about 12'
Maximum incline:	21,4%

Quezzi Lift (2015)

The path begins in via Pinetti, inside a tunnel that served as an air-raid shelter during the World War II.

The cabin is pushed in the open after 27 metres.

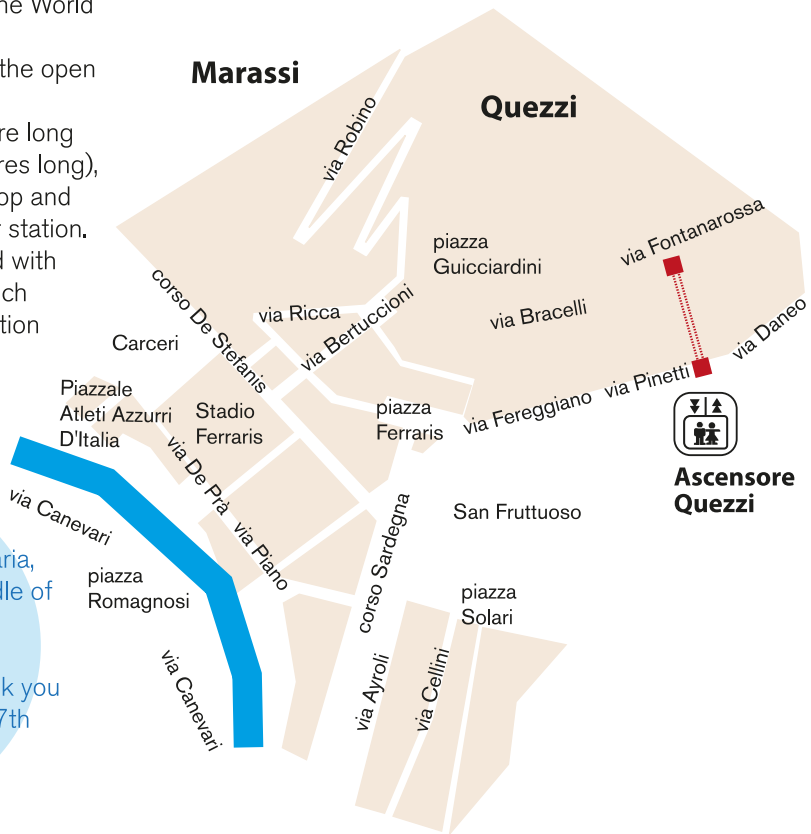
It covers a new 23 metre long trench section (23 metres long), with an intermediate stop and then reaches the upper station.

The system is equipped with photovoltaic panels which power the cabin ventilation and lighting.

Things to do

A visit to the Parish of the Nativity of St. Maria, dating back to the middle of the 12th century.

With a fifty minutes walk you reach Fort of Quezzi (17th century).





Type:	Lift of Quezzi
From:	Pinetti Street
To:	Fontanarossa
Timetable:	from Monday to Saturday 6.50 – 19.50

Length:	131 m
Capacity:	25 persons
Frequency:	continued routes
Journey time:	about 2'

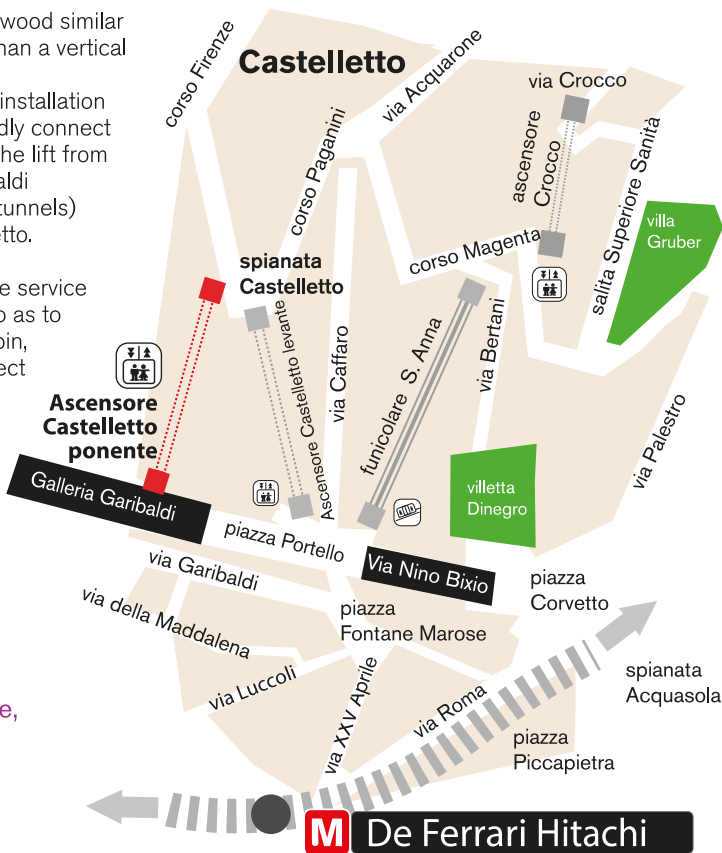
Castelletto Ponente Lift (1909)

This lift, built in 1929, is made of wood similar to an elegant living room rather than a vertical transportation system.

Equal to the Castelletto-Levante installation it was born from the need to rapidly connect the Historical Centre (access to the lift from Piazza della Meridiana/Via Garibaldi or Piazza Portello was by way of tunnels) to the residential area of Castelletto.

After 30 years of technical life the service was suspended in March 2018 so as to modernize it and restore the cabin, which maintained its original aspect and materials.

Restoration carried out on the plasters also preserved their antique fascination.



Things to do

Comfortably sitting on the benches of the esplanade, you can taste ice creams and pastries of renowned tradition.



Type:	Lift Castelletto Ponente
From:	Galleria Garibaldi
To:	Esplanade Castelletto
Timetable:	every day 6.40 – 00.00
Length:	63 m
Capacity:	28 persons/cabin
Frequency:	uninterrupted service
Journey time:	about 1'

Other lifts run by AMT:

Manin Contardo

Connects Manin square to Contardo street.
Open on working days from 6.05 to 24.00 and
on holidays from 7.20 to 24.00.

Ponte Monumentale

Connects XX Settembre street to Corso
Andrea Podestà in the Carignano district.
Open on working days from 6.25 to 21.40 and
on holidays from 8.00 to 20.30.

Montello Ponterotto

Connects Ponterotto street to Montello street.
Open on working days from 7.00 to 20.55 and
on holidays from 7.40 to 19.45.

Bari Centurione

Connects Adamo Centurione street
to Bari street. Open on working days
from 6.30 to 20.30.

Mura degli Angeli

Connects Dino Col street to Mura degli Angeli
street. Open on working days from 6.10 to
21.30 and on holidays from 7.55 to 21.15.

Magenta Crocco

Connects Corso Magenta to Crocco street.
Open on working days and holidays
from 6.55 to 0.40.

Fares

Discover the most suitable trips for you
on our site www.amt.genova.it

Contacts

Customer Care
848 000 030 / 010 55082 41
servizioclienti@amt.genova.it
www.amt.genova.it





CONTACTS

www.amt.genova.it

Customer Care 0039 010 55 82 414 - 848 000 030

servizioclienti@amt.genova.it



Leaflets available at visitors centres and AMT points

Learn more on www.amt.genova.it



Download the
AMT APP

to use best our network

GENOVA
MORE THAN THIS

